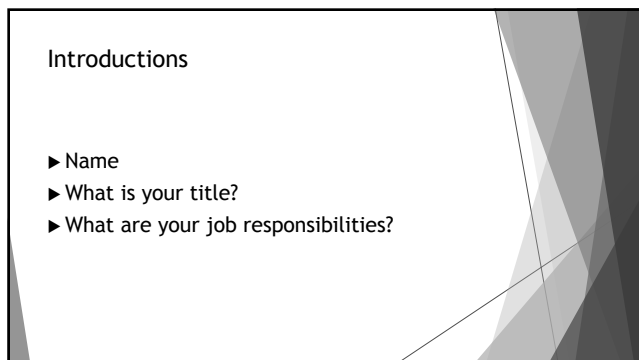
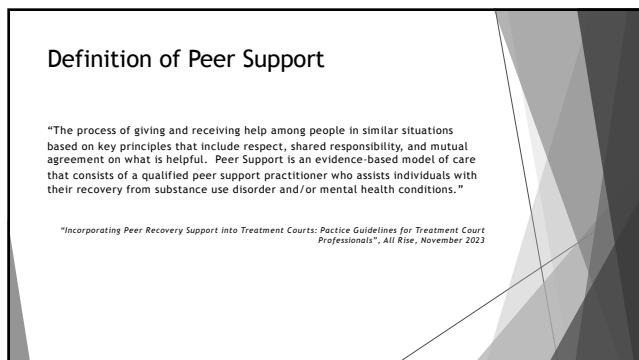




1



2



3

Types of Peer Support

- ▶ 12-Step groups (AA, NA, Celebrate Recovery, etc...)
- ▶ CRSS (Certified Recovery Support Specialist)
- ▶ CPRS (Certified Peer Recovery Specialist)
- ▶ Alumni groups
- ▶ Others?

4

Benefits of Peer Support

- ▶ Increased sense of social support
- ▶ Improved housing stability
- ▶ Increased willingness to begin and continue SUD treatment
- ▶ Increased satisfaction with SUD treatment
- ▶ Improved relationships with providers
- ▶ Reduced use of substances
- ▶ Reduced re-hospitalization rates
- ▶ Reduced use of emergency departments
- ▶ Reduced involvement with the criminal justice system
- ▶ Reduced recurrence of SUD's
- ▶ Others?

(*Financing Peer Recovery Support: Opportunities to Enhance the Substance Use Disorder Peer Workforce*, SAMHSA, 2024)

5

Challenges

- ▶ Job description
- ▶ Hiring & retention
- ▶ Relapse
- ▶ Workforce policy and procedure issues
- ▶ Confidentiality vs. "Tattling"
- ▶ Supervision - is this a PSC/Judicial/partner organization position?
- ▶ Pay rates
- ▶ Who funds this position?
- ▶ Trust issues with the judicial system/staff apprehension
- ▶ Differences in urban vs. rural? Why?

6

What IS working for your system?

7

What are some resources that you would recommend?

- ▶ "Incorporating Peer Recovery Support into Treatment Courts: Practice Guidelines for Treatment Court Professionals", All Rise, November 2023
- ▶ "Financing Peer Recovery Support: Opportunities to Enhance the Substance Use Disorder Peer Workforce", SAMHSA (Center for Financing Reform and Innovation), 2024, Publication No. PEP23-06-07-003
- ▶ Illinois Certification Board - Peer Recovery Support Training Program - Accreditation Standards - CRSS and CPRS, Illinois Department of Human Services, <https://www.dhs.state.il.us/Page.asp?item=137327>
- ▶ NAADAC - Illinois Peer Specialist Program, <https://www.naadac.org/illinois-peer-specialist-program>
- ▶ NAMI (National Alliance on Mental Illness), <https://www.illinoispeerspecialists.org/become-a-peer-professional>
- ▶ "Peers in Courts", Behavioral Health State Court Leadership Brief, July 2022

8

Liesl Wingert, BS, MHA
Program Coordinator - East Region
Southern Illinois University School of Medicine
Center for Rural Health and Social Service
Development

lwingert68@siu.edu

9
